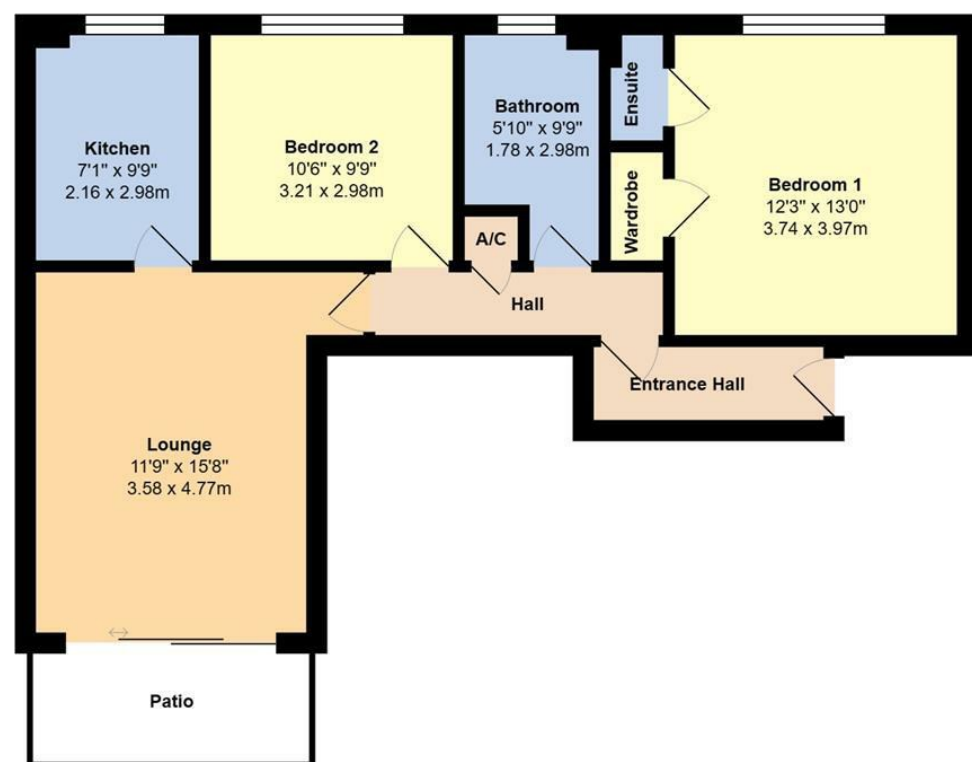


Sea Road, Rustington Littlehampton BN16 2LY

Guide Price £275,000 - Leasehold



Ground Floor

Total Area: 711 ft² ... 66.0 m² (excluding patio)

Whilst every attempt has been made to ensure the accuracy of the floor plan contained here, measurements are approximate and no responsibility is taken for error, omission or mis-statement.
This plan is for illustrative purposes only and should be used as such by any prospective purchaser.
Created by Jtm 2023

TENURE - Leasehold

Council Tax Band: D

Energy Performance Rating: C

AGENT'S NOTE - For clarification, we wish to inform prospective purchasers that we have prepared these sales particulars as a general guide. We have not carried out a detailed survey nor tested the services, appliances and specific fittings. Room sizes should not be relied upon for carpets and furnishings.

WITH OVER...

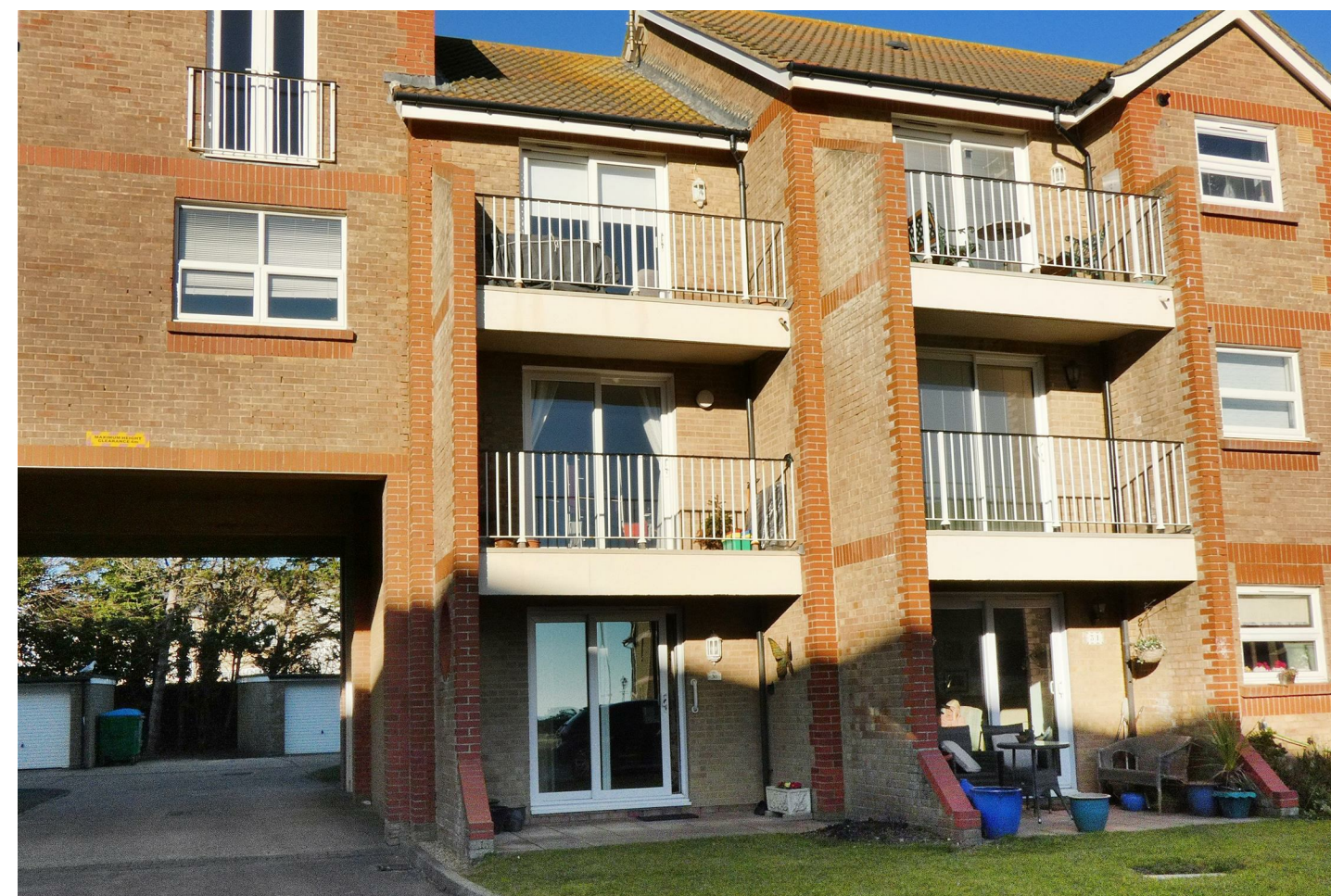


At an Average rating of

4.9/5 ★★★★★



Glyn-Jones & Company
Rustington Office Sales
01903 770095
rustington@glyn-jones.com



- South Facing Patio with Sea View
- Popular Development
- Modern Kitchen
- Gas Central Heating
- Long Lease

- Purpose Built Ground Floor Flat
- Two Double Bedrooms
- En-Suite Shower
- Double Glazing
- No Onward Chain

SOUTH FACING PATIO WITH SEA VIEW | Purpose Built Ground Floor Apartment | Popular Development | Two Double Bedrooms | South Facing Lounge/Dining Room | Modern Kitchen | En-Suite Shower | Bathroom | Gas Central Heating | Double Glazing | Garage | Long Lease | No Onward Chain | Viewing Recommended |

WITH OVER...



COMPANY REVIEWS

At an Average rating of

4.9/5 ★★★★★



Glyn-Jones & Company
Rustington
01903 770095

30 The Gilberts, Sea Road, Rustington, Littlehampton, West Sussex, BN16 2LY

